



Mini-CrimeScope® MCS-400

*The premiere crime scene forensic light source.
Quite possibly the world's most popular Forensic
Light Source.*

A compact, portable, rugged UV-visible tunable light source with 400W metal halide lamp (1500 hours nominal life time, more in reality). The system includes a 2 meter liquid light guide, 10mm active diameter, with dual armor metal protection, 4 pairs of goggles, 1 or 2 remote filter wheels with 8 positions each mounted on the working end of the light guide for one hand-operation. A lightweight case is also included. Camera filters and additional goggles are available.

For Crime Scene and Lab Work:

Fingerprints (porous/non porous surfaces), body fluids, trace Evidence, bite marks and bruises, shoeprints, gun shot residues, bone fragments, drugs.

Now, Even More Power!

The Mini-CrimeScope® has been among the most powerful Forensic Light Sources for some time.



Designed for portability.

Now, utilizing a higher Intensity 400W bulb, manufactured specifically for use in the Mini-CrimeScope®, as well as new high throughput, high durability filters, the MCS-400 stands alone as the most intense Forensic Light Source. Intensity and Power allow for better sensitivity. It helps you find evidence you could not see before.

- **NEW** high throughput filters
- **NEW** higher intensity 400W bulb

- **Most versatile - 6 to 16 wavelengths**

- **Remote filter wheels for one hand operation**
- **Large, uniform illumination spot**



Mini-CrimeScope® 400.

Portability

The MCS-400 is as easy to use at the crime scene as it is to use in the lab. It is transported in a rigid, padded case that is easily brought to the scene by simply throwing the strap over the users shoulder. The MCS-400 is designed to travel.

Ease of Use

The MCS-400 features a patented filter wheel at the working end of the liquid light guide. To switch a filter the user need only "flick a thumb" on the hand that is directing the light guide. No other light source can make that claim.

Upgradeability

To be a top of the line Forensic Light Source, the unit must be useful today AND tomorrow. With this as a rule, the Mini-CrimeScope® 400 was designed to be upgradeable. Additional filter wheels can be added any time.

THE MINI-CRIMESCOPE® 400 IS THE BRIGHTEST FORENSIC LIGHT SOURCE ON THE MARKET!



When using any alternate light source, 2 features are critical, light intensity and wavelength selection. The Mini-CrimeScope® 400 provides very high light intensity in a round uniform spot that is easily controlled, allowing the user to maximize how much light falls onto the evidence. The more light on the evidence, the brighter the fluorescence.

The Mini-CrimeScope® provides multiple wavelengths and the easiest way to switch them. Multiple wavelengths are critical in rejecting background fluorescence. The evidence you are looking for generally fluoresces while being excited at most wavelengths of the spectrum. When you have a background that also fluoresces the multiple wavelengths allows the user to select for the ideal wavelength to allow for rejection of the background, maximizing contrast.

Components and Specifications:

- Rugged portable main unit with fold down handle, front control panel with power adjustment knob, and dual fan cooling.
- 10mm active diameter liquid light guide (6 feet long) with dual armor plate.
- 4 pairs of goggles: 1 UV protection, 1 yellow, 1 orange, 1 red.
- Carrying case.

System is manufactured under ISO 9001 standards.

Type of Lamp: Metal Halide
 Electrical Power: 400W
 AC Electrical Specifications: 110-220 VOLT +/- 10%, 50/60 Hz, 7 AMP
 Warranty: One year on parts and labor



Every MCS-400 comes with a rugged, padded carrying case, providing protection against even the roughest of handling. We routinely travel with the "Mini", checking it as luggage in the case above without worries.

Light Output Specification (as measured in the beam that actually reaches the evidence):

White Light Beam Output: Average: 14,000 lux, Minimum: 12,000 lux
 535nm Light Beam Output: Average: 4,500 lux, Minimum: 3,500 lux

MCS-400-8F

Included Filters:

- 1 Remote Interchangeable thumbwheel (Patented) with built in collimator. Includes the following wavelengths in a protective housing: UV365-415-455-CSS-515-535-555-White Light.

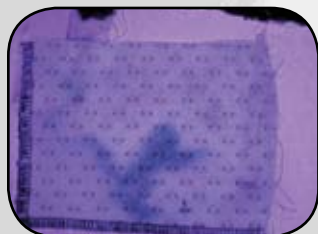
(Compact 6F filterwheel available)

MCS-400-16F

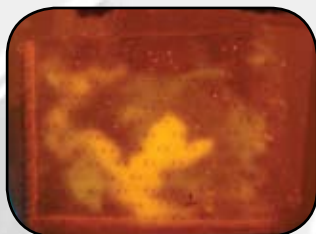
Included Filters:

- 2 Remote Interchangeable thumbwheels (Patented) with built in collimator. Includes the following wavelengths in a protective housing: UV365-UV390-415-445-455-475-495-CSS-515-535-555-SP575-575-600-630-White Light.

(12F configuration available)



Seminal fluid under UV.



Seminal fluid under CSS with orange camera filter.



One-hand operation, the ability to direct the output and switch wavelengths, with one hand.

As with any alternate light source, always wear eye and skin protection. Please illuminate responsibly.

MINI-CRIMESCOPE® MCS-400

