



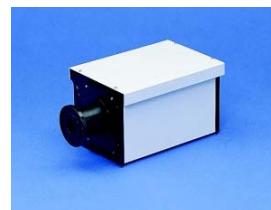
### *Spectroscopic Accessories*

#### Accessories for spectroscopy:

Jobin Yvon, Specialists in Spectroscopy, offers a huge variety of accessories for monochromators and detectors. Our policy is to optimize each component in a spectroscopic system to maximize your signal: **Even with the most sensitive detector in the world, if your experimental setup is not setup correct, your results will be poor.**

#### Light Sources

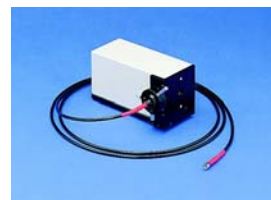
- Tungsten Halogen 100w or 250w (350 – 2000 nm)
- Xenon 75 w or 450w (200 – 1100 nm)
- Deuterium 30w (200 – 400 nm)
- Globar (compact ceramic or pencil emitter) (0.6 – 15  $\mu$ m)



#### Fibers

#### Optical fiber adapters

- Single fibers, round to line bundles, multi-arm or customized fibers
- Holders or Lens based optical fiber adapter for UV Vis range
- Mirror based imaging fiber adapters for UV to NIR or image correction
- Fiber adapters for light sources
- Fiber collimators and focusers



#### Sample Compartments

#### Microscopes

#### Sample holders

- Lens based three port Sample Compartment (UV – Vis)
- Mirror based three port Sample Compartment with reference channel. 180, 90, 45° incident light.
- Fiber input/output Microscope
- Solid and liquid sample holders
- XZ translation stage for sample holders
- Motorized XY stage



#### Single detectors

- Large choice of PMT detectors
- Cooled PMT detectors
- Solid state detectors



#### Accessories for detectors

- Acquisition controllers
- Power supply for PMT
- Photon counting for PMT



#### Filter wheel

#### Filters

- Manual filter wheels or filter slide
- Automatic filter wheel
- Automatic filter slide for imaging fiber adapter



.../...

Contact us for our full list of accessories