



## PARTICLE SIZE ANALYSIS OF PROTEIN (Lysozyme: 0.1 mg/mL)

### Summary

Lysozyme is an enzyme found in chicken egg-whites, tears, saliva and other secretions. It protects eggs, eyes, and mouths from microbial infections. In the industrial field, lysozyme is extracted from egg-whites and used in food and medical products. It has a molecular weight of 14.7 kDa, isoelectric point of 11 to 11.5, optimum pH of around 5, and optimum temperature of 50 degrees C.

Lysozyme has a diameter of 3 to 5 nm (see Fig. 1).

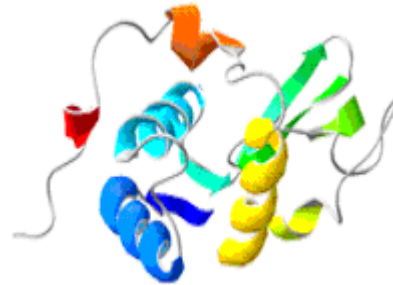


Fig. 1: The three-dimensional structure of lysozyme

### Analytical Test Method

Instrument:	SZ-100 nano Partica
Temperature:	25 ± 0.3 degrees C
Sample:	Lysozyme (MP Biomedicals Inc.) added to aqueous solution of acetic acid (pH = 4)
Sample refractive index:	1.60
Dispersion medium refractive index:	1.333
Distribution notation:	Volumetric basis
Concentration:	0.1 mg/mL

The average diameter of lysozyme as measured with the SZ-100 was 4.57 nm (see Fig. 2). Reproducibility was good, with the coefficient of variation (CV) of 1.27 (see Table 1).

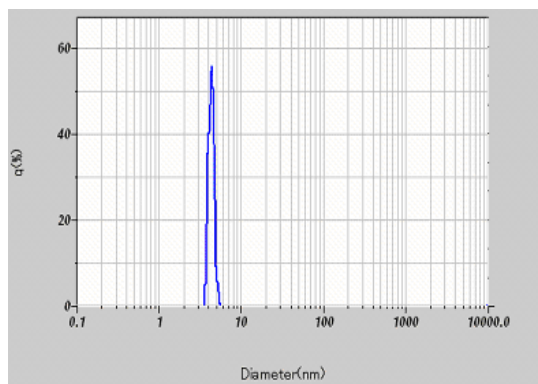


Fig. 2: Lysozyme particle size distribution measurement

Table 1: Lysozyme measurement reproducibility

	Average particle size (nm)
1	4.6
2	4.5
3	4.6
Average	4.57
Standard deviation	0.058
CV (%)	1.27



Particle Characterization Analyzer

## Applications Data Sheet

---

SZ-Series Instruments

ADS128

Lysozyme

Copyright 2011, HORIBA Instruments, Inc.

For further information on this document or our products, please contact:

HORIBA Ltd.  
2, Miyanohigashi,  
Kisshoin  
Minami-Ku Kyoto 601-8510 Japan  
+81 75 313 8121

HORIBA Scientific  
34 Bunsen  
Irvine, CA 92618 USA  
1-888-903-5001

HORIBA Jobin Yvon S.A.S.  
16-18, rue du Canal - 91165 Longjumeau France  
Tel. +33 (0)1 64 54 13 00

[www.horiba.com/us/particle](http://www.horiba.com/us/particle)  
[labinfo@horiba.com](mailto:labinfo@horiba.com)