



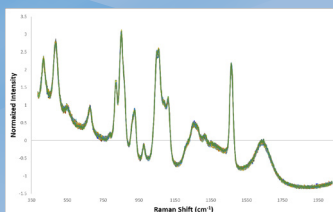
## High Throughput Raman Screening For Pharmaceutical Industry



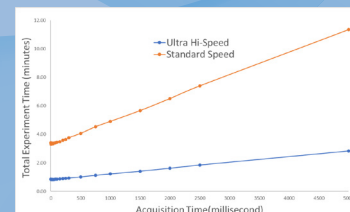
**PoliSpectra® RPR**  
Rapid Raman Plate Reader  
**96 wells measured in 1 minute**

ELEMENTAL ANALYSIS  
FLUORESCENCE  
GRATINGS & OEM SPECTROMETERS  
OPTICAL COMPONENTS  
CUSTOM SOLUTIONS  
PARTICLE CHARACTERIZATION  
RAMAN / AFM-RAMAN / TERS  
SPECTROSCOPIC ELLIPSOMETRY  
SPR IMAGING

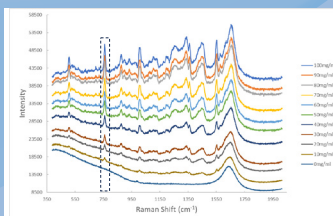
- Excellent well-to-well signal reproducibility
- Ultra-low well-to-well crosstalk
- Ultra hi-speed configuration RPR scans 96 wells in less than 1 minute @ 500 ms exp. time per well
- Compatible with liquid handling systems for automatic sampling



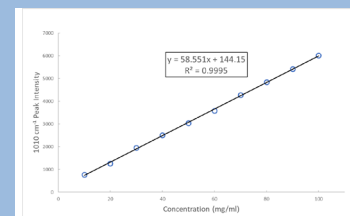
Well-to-Well reproducibility (20% Gly in 96 wells)



96 Wells Scanning Time (Ultra hi-speed vs. standard speed)



Quantitative Analysis of Lysozyme (commonly used enzyme in Bio-Pharma)




*“PoliSpectra RPR is a high-speed, nondestructive, and effective screening tool ready to be integrated into High-Throughput Screening (HTS) processes in the pharmaceutical industry.”*

[www.horiba.com/usa/rpr](http://www.horiba.com/usa/rpr)

**Automatic Self-Calibration**  
ensures reliable data  
& meets industry-standard  
performance criteria

**Laser Wavelength**  
532 nm & 785 nm options  
increase the types of samples  
that can be characterized  
**Speed/Configurations**  
Ultra hi-speed  
Hi-speed  
Standard speed

**RPR Control Software with  
OPC-UA or REST API interface**  
designed for interoperability  
with standard  
pharma systems

**Well-plate compatibility**  
96 or 384 WP format  
  
Auto-recognition of shallow vs. deep well  
