



ImaQuest® Fingerprint Enhancement Software Suite

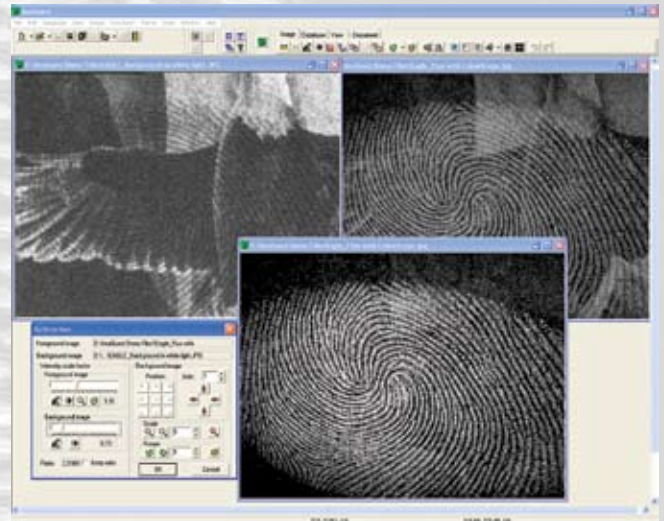
Enhancement and comparison software capture systems with optical enhancements.

Designed specifically for fingerprint and palmprint enhancement and comparison.

ImaQuest® is a software suite that features new powerful tools for capture, tracking of enhancements, compressed and encrypted storage, minutiae extraction, side by side comparison & charting.

ImaQuest® enhancement allows the removal of fluorescent backgrounds, removes periodic backgrounds with FFT, and features a broad range of digital filters to process the prints. ImaQuest® tracks all changes made to the image automatically and features a unique format which records the original image and all mathematical treatments applied to the image, encrypts the information, and then restricts access through multiple user accounts and passwords.

IdentQuest™ is the digital comparator component. It features automated extraction, as well as manual edition. Load, scan, or acquire any two prints and they can be viewed side by side. Choose either automated comparison or do it manually. Once compared and marked, the pair can be transferred to a built in document creator. Templates for



True digital background subtraction.

individual departments can be created, saved, and reused. Work can be saved to images for use in Powerpoint presentations. Printouts for court or case jackets can be printed on any installed printer.

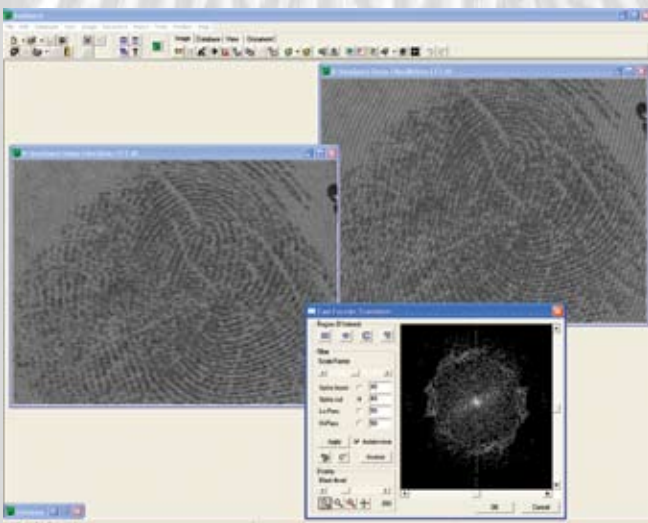
Image Capture

ImaQuest® has the ability to interface with various capture devices, including scanners, digital cameras, and CCD cameras. It can acquire RAW format images from digital cameras directly, without using software from the individual camera manufacturers.

On-Screen Video Tutorials with narration are included that take the user through the functions of the software. Ideal for beginning users, as well as a refresher for experienced users.

Enhancement Features

FFT (Fast Fourier Transform) with live display while FFT areas are cut or boosted; unique FFT double ellipse boost function; overlapping print separation via FFT; image subtraction with live view of adjustments and results, lock/unlock ratio; selection of region of interest in various shapes, digital filtering including Gauss, Equalization, Sharpen, Lowpass, and Statistical Scaling; Zoom; Brightness & Contrast; Histogram; Resizing; Rotate; Invert.



LIVE FFT, for the removal of periodic, repeating backgrounds. So easy, it must be seen to be believed.



IMAQUEST® FINGERPRINT ENHANCEMENT SOFTWARE SUITE

Automated Tracking

ImaQuest® tracks and records all changes made to the image automatically and features a unique, encrypted format which records the original image and all mathematical treatments applied to the image. The tracking history can be reviewed or output as a text file for court presentation.

Supported Image Formats:

BMP, JPEG, TIFF, PCX, TGA, GIF, IQD, TRC (History Tracking Format), WSQ (FBI Certified 12:1), Adjustable Compression ratio (1:1 – 20:1) with live image preview.

Operation Systems:

Windows® 98/2000/XP

ImaQuest® Training Options

Options are available for training at user facility, as well as at the factory in Edison, New Jersey. Training can also be performed remotely via the Internet. Additionally SPEX Forensics offers regularly scheduled User sessions on the web, free of charge.

CrimeScope® Digital Imaging Systems

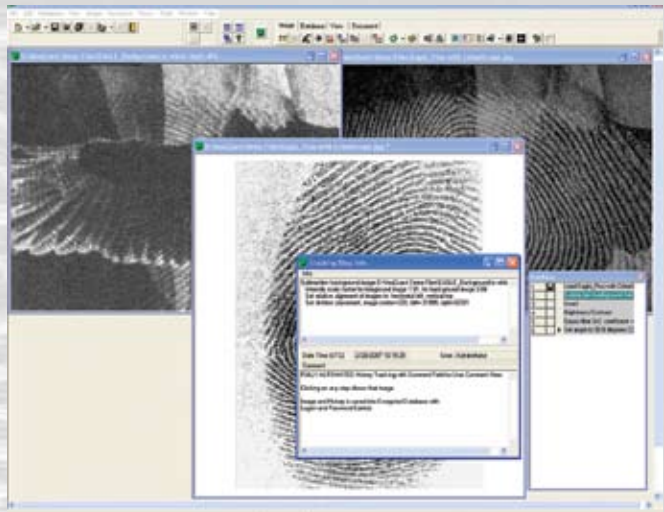
The C.D.I.S is a complete system for the detection, optical enhancement, capture, digital enhancement, and output of fingerprint and palmprint images, as well as images of other types of evidence. C.D.I.S includes the computer hardware, ImaScope high resolution CCD camera, filters and lenses for optical enhancements, and the ImaQuest® software suite for digital enhancements. Choose a SPEX Forensics Light Source to produce the illumination or provide your own existing light source.

ImaScope Camera Specifications

Resolution: 1392x1040 pixels, On-chip integration capability, 12bit capture = 4,096 levels of contrast allowing strong and weak



CDIS – CrimeScope Digital Imaging System.
A complete optical and digital workstation.



Automatic tracking of every step with optional annotation.

fingerprint areas to be captured without saturation or loss effect. Spectral range UV-VIS-NIR which is 280nm -1000nm. Frame frequency 7.5 frame/sec (draft mode 30 frame/sec), Line frequency 8KHz, scanning rate 14 MHz, gain control from -2dB to Up to 46dB, frame storage: from 1 to 32 frames.

Optical Enhancements

Two objective lenses – high quality macro 105mm lens for fingerprint capture and zoom lens 28-105mm, 2 Longpass filter slides with 10 filters for visible range and 10 for infrared range.

1 bandpass filter slide with 5 Bandpass filters for visible range.

AFIS Database Options

C.D.I.S. systems can also be configured with our PrintQuest® AFIS-APIS system in various database sizes.

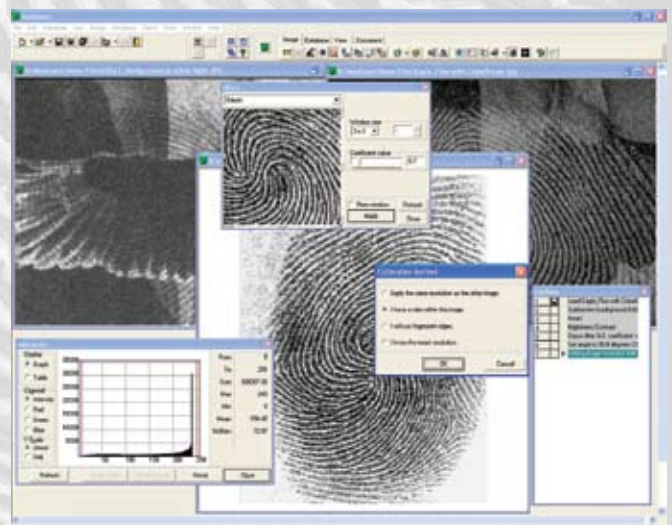


Image filters, histogram, and a unique calibration method.