



PrintQuest® AFIS - APIS System

AFIS and APIS fully integrated in one package. PrintQuest® offers unmatched accuracy, automation, and ease of use for a fraction of the cost of previous AFIS systems.

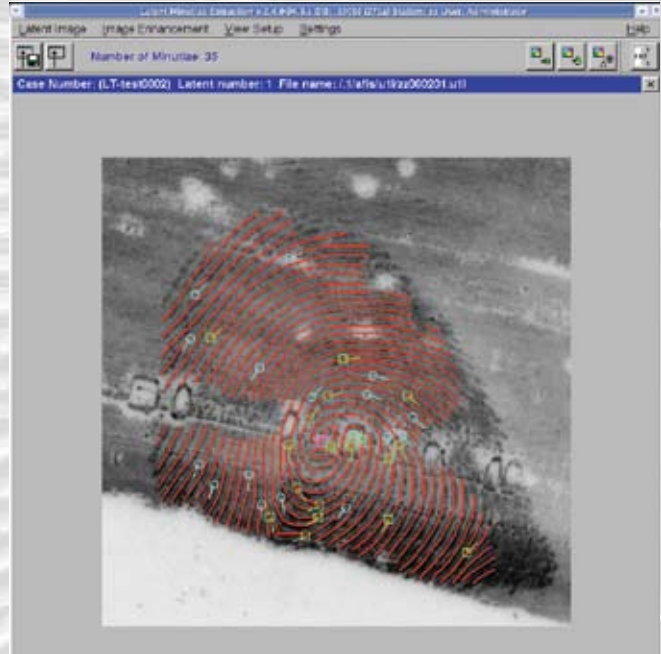
PrintQuest® AFIS and APIS stand-alone desktop PC systems are now available and AFFORDABLE while offering the same tools and a greater ease of use than most current State AFIS systems. And PrintQuest® PC based systems can be expanded to large server based systems.

A Complete System

All PrintQuest® systems arrive as a complete package including a Dell desktop computer, scanner for 500/1000 DPI, Ink jet printer, LCD monitor, keyboard, r/w DVD combo drives, ETHERNET adapter, Battery Backup UPS, and ImgTool Image Enhancement software for latent image enhancement. The system includes detailed Audio/Video help functions to guide users through each step of the AFIS/APIS process. Three days of training at the user facility is standard, as is the One year of support. Users are automatically subscribed to our quarterly PrintQuest® newsletter, keeping your department abreast and up to date on the latest releases and features and happenings in the PrintQuest® community.

Powerful Skeleton Extraction

Unique extraction techniques and matching algorithms for skeleton information (ridge lines) give PrintQuest® much higher accuracy than systems using only minutiae points in their matching software. PrintQuest® still displays commonly used line ends and line



Skeleton and minutiae points automatically extracted by PrintQuest®.

bifurcations, but the user works on the skeleton when preparing a latent for search. Approximate center, delta, angle and patterns should be indicated if known. Otherwise the user selects to search in 360 degrees of rotation, with no known center.



A complete PrintQuest® System.

PRINTQUEST® AFIS - APIS SYSTEM

Fast and User-Friendly Tenprint Entry

PrintQuest® features high accuracy auto-extraction of centers, deltas and patterns. The user can edit features, but PrintQuest® saves users a lot of time because few corrections are required. Poor rolled prints can be replaced with slap prints. Both NCIC and HENRY classifications are included. Both are assigned automatically and can be edited by the user.

Available Searches

There are 8 types of searches available in PrintQuest® AFIS-APIS, 4 for fingerprints and 4 for palms. They are:

- Ten Print Card to Ten Print Card
- Latent to Ten Print Card (fingers)
- Ten Print Card to Latents (fingers)
- Latent to Latent (fingers)
- Palm Latent to Palm Card
- Palm Card to Palm Latent
- Palm Latent to Palm Latent
- Palm Card to Palm Card

Easy System Restore

PrintQuest® features automatic archiving of entered data. While archiving to CD's and removing them to a secure site is recommended, dual hard drives in the system replicate data in case of hard drive failure. In emergency situations, the whole database structure can easily be restored from one hard drive once the failed hard drive is replaced. There is a full set of tools for complete database management, including diagnosing and repairing data segments. In the event of power failure at the user facility, PrintQuest® is



PrintQuest® main screen. All applications, modules, and functions can be accessed from one central location.

Access to individual areas and processes can be password controlled.



Ten print database entry screen. Centers, deltas, and patterns are automatically set. NCIC and Henry are also automatically set, however, all information can be edited by user.

designed to back up the current search data and information while it shuts itself down. Once power is restored, simply turning the system on allows PrintQuest® to pick up where it left off. These are standard features.

Size Specific Pricing

Desktop AFIS systems usually come in a "one size fits all" configuration. An unlimited database is nice but, if you don't have the data (recent ten print cards) to support it and the means to load the database than this type of system may be a waste of good dollars than can be used elsewhere, like Ten Print Card conversion. By varying the size of the database and varying the corresponding List Price, PrintQuest® systems have been designed to allow users to purchase the systems that best serve their immediate need as well as the anticipated need for 3 to 4 years. Any size specific PrintQuest® AFIS may be upgraded to a larger or unlimited database at any time.

PrintQuest® databases can be scaled from thousands to millions of Ten Print Cards.

Friendly User Interface.

PrintQuest® AFIS includes friendly, easy-to-use interfaces for all system modules. When demoed to a prospective customer, PrintQuest® is routinely ranked as the easiest system to use. The interface is designed for expert and novice alike. Please contact us for a list of users to speak with. Ask them how easy it is to use PrintQuest®.





PrintQuest® Specifications

Palm Capability

In PrintQuest®, it is not required to split the palm into segments. The entire palm is treated as a single entity. Other systems require the palm to be split into a number of segments. Splitting the palm dramatically increases the processing time for the User. PrintQuest® saves time.

With today's faster processors, the increase in search time due to a systematic search of the full palm is negligible.

NOT splitting palms means more work for the computer processor and less work for the USER. The ultimate idea behind purchasing a local Desktop AFIS is to save time for the department using it. Splitting the palms does not save time.

PrintQuest® saves time.

AFIS Software Specifications (General and Finger functions)

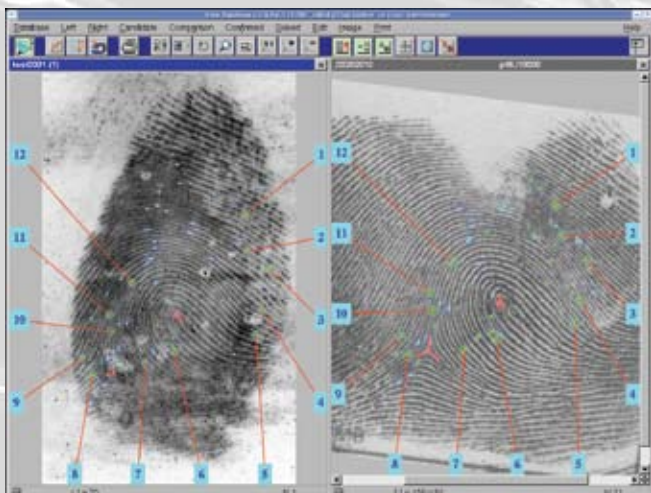
- Software includes 4 types of finger searches (Latent to card, card to latent, card to card, latent to latent)
- Software AFIS license: Unlimited database or economical size specific database 3K-5K-7.5K-10K-15K-25K Ten Print Cards.
- System is built under high quality standards. ISO 9001 certification letter is provided.
- Ability to auto-extract and display minutiae points and skeleton, ridge count. NCIC and Henry classifications.
- Comparison module uses multiple parameter in searches: Minutiae points, skeleton including Ridge count up to 15 neighbor points, Flow vectors.
- EFTS Import and Export. Conversion to FBI IAFIS Latent format. Fully integrated IAFIS interface for upload of latent, download of candidate list and tenprint hit, via FBI provided modem or TCP/IP connection.
- Ability to automatically number and chart minutiae points around latent and finger prints in comparison menu.
- Ability to add/remove minutiae points in latent process and in final comparison menu both on latent & card side.
- Ability to input latents in various modes: 1:1, ruler scaled, or unscaled.
- Ability to enhance latent print, integrated within AFIS-APIS Software: 3D, Sharpen, Equalize and FFT (boost and cut).

PrintQuest® APIS Features The Ultimate in Palm Matching Ease of Use

To enter a palm card, just enter the text, scan and the rest is automated. There is no need to manually edit minutiae. No need to check 2,000 points per palm card. The palm card entry operator does not need to be skilled in print identification. Think twice before upgrading your AFIS with the same brand APIS. Not all APIS systems are alike.

APIS Software Specifications (Palm functions)

- Software includes 4 types of palm searches (latent to card, card to latent, card to card, latent to latent)
- APIS palm functions fully integrated with AFIS software.
- Ability to edit skeleton on latent palms, display skeleton and use skeleton in searches.
- Ability to capture hand/palm images of size up to 6x8 inches.
- Ability to search full hand (flat finger area, phalanx area and palm) in one single search process for an unknown latent.
- Ability to search unknown latent palm with 360 degrees rotation, unknown center, using minutiae points and ridge count in automatic comparison process.
- Ability to enter palm cards without preview scans: Just one scan and hand/palm box one-time positioning.



A latent finger to TP card hit with common points selected by user.

Above shows the print matching screen. Matching points are automatically circled by the system. The user then selects the points confirming the match and the system draws lines and numbers them. To confirm, the expert reviewing the match can manually add more points that he/she visually identifies, such as very short islands, pores, etc.

Many Options to Serve Your Needs and Applications

For large databases, server configurations are available, ranging from 100K to millions of cards. Add-on input workstation for card and latent input processes are available to help expand your database. A department can add a single print LiveScan for quick single print search, or ID verification.

Compare Systems

We recommend you compare systems directly before making the decision to purchase. We suggest giving prospective systems a test with known matching pairs. Compare the competing systems accuracy and ease of use. We are confident PrintQuest® will be your choice. And when it comes to References, not only do we have well over a hundred, they are very enthusiastic about the system. Contact them and ask about the results they are getting. You will be glad you did.

We urge you to compare the systems on the market. It is not about the number of users, it is about the results they get.

Software Configuration

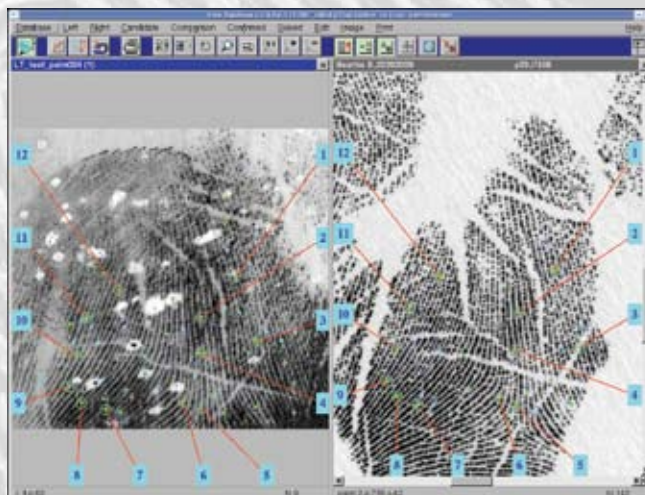
PrintQuest® contains both Windows® XP and Linux® on different partitions of the Hard Drives.

On the Red Hat® Linux® Partition of the computer we install the PrintQuest® AFIS/ APIS software. Linux® provides stability as well as security with a dedicated system. Linux® is a derivative of UNIX used by the main AFIS brands and makes for a friendly environment. PrintQuest® AFIS, in Linux®, provides a full window based environment which requires no special training for the Operating System. Linux® allows the Agency to keep the AFIS- APIS database SECURE with strong access control. Linux® is not susceptible to Windows® based VIRUSES, CRASHES, and is universally acclaimed for its superior stability.

Keep in mind, to be effective ANY AFIS system should be capable of operating 24 hours a day and 7 days a week. Linux® provides the necessary stability.

Image Scale

PrintQuest® AFIS does not require the use of scaled latents. It can work with latents of any (even unknown) scale without influence on accuracy of matching results.



A palm latent to palm card hit with common points selected by user.

Ten Print Card Scanning and Database Conversion Services are Available.

Call us for a demonstration.