



Introduction to Zeta Potential Measurement with the SZ-100



Jeffrey Bodycomb, Ph.D.
HORIBA Scientific
www.horiba.com/us/particle



Explore the future

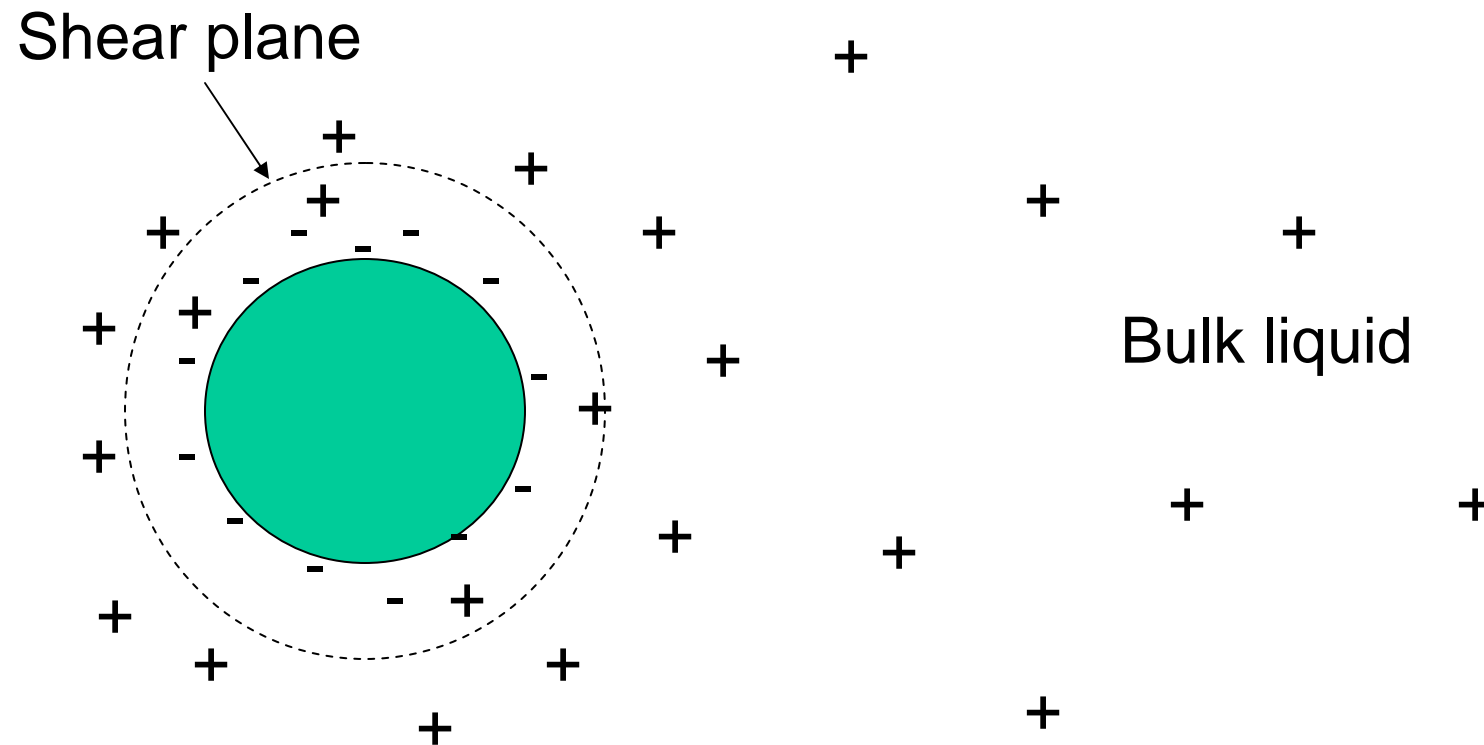
Automotive Test Systems | Process & Environmental | Medical | Semiconductor | Scientific

HORIBA

© 2010 HORIBA, Ltd. All rights reserved.

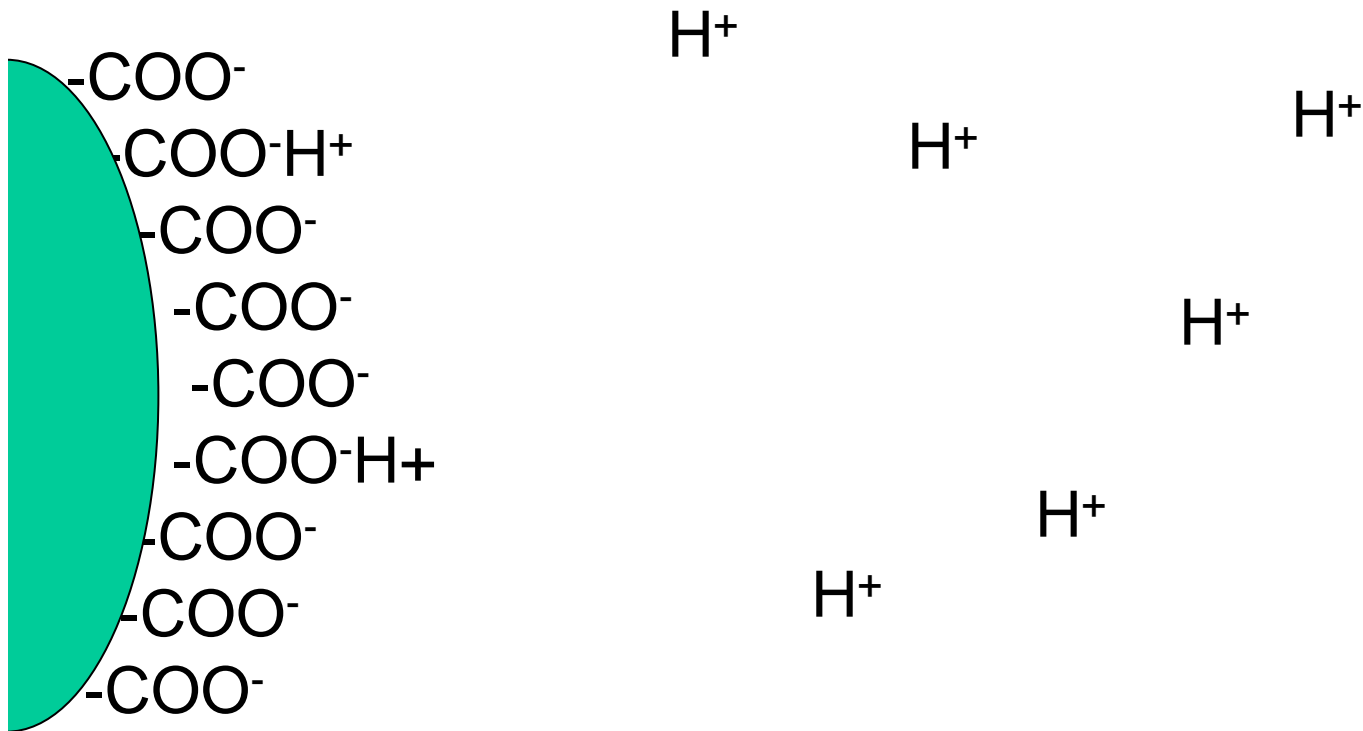
What is Zeta Potential?

- Zeta potential is the charge on a particle at the shear plane.



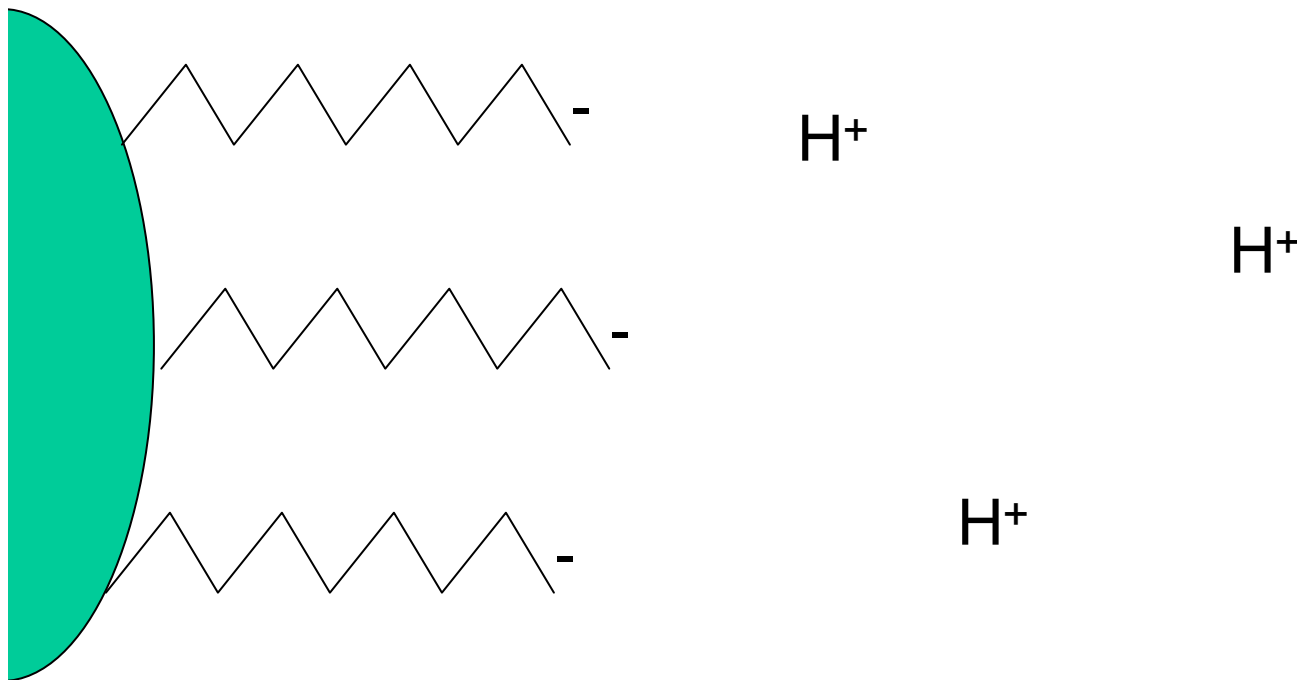
How do Surfaces Acquire Charge?

Ionization of surface groups



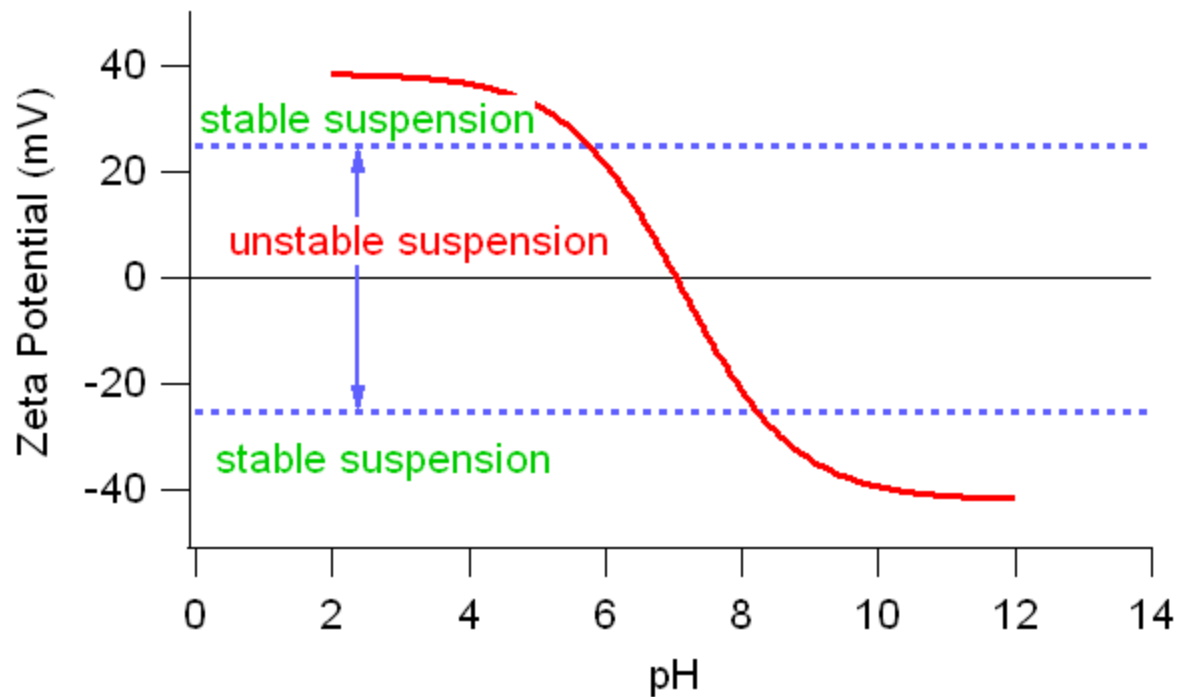
How do Surfaces Acquire Charge?

Specific adsorption of ions, e.g. ionic surfactants



Why Zeta Potential?

- Good way of evaluating electrostatic stabilization of suspensions
- Can use to predict interactions



How to Measure Zeta Potential:

- Acoustic techniques (use sound to probe particle response)
- It is much more popular to use light scattering to probe motion of particles due to an applied electric field. This technique is known as electrophoretic light scattering.
- Used for determining electrophoretic mobility, zeta potential.

Other Light Scattering Techniques

- Static Light Scattering: over a duration of ~1 second. Used for determining particle size (diameters greater than 10 nm), polymer molecular weight, 2nd virial coefficient, R_g .
- Dynamic Light Scattering: use scattered light to probe random motion of particles. If this motion is due to Brownian motion the technique can be used to determine particle size.

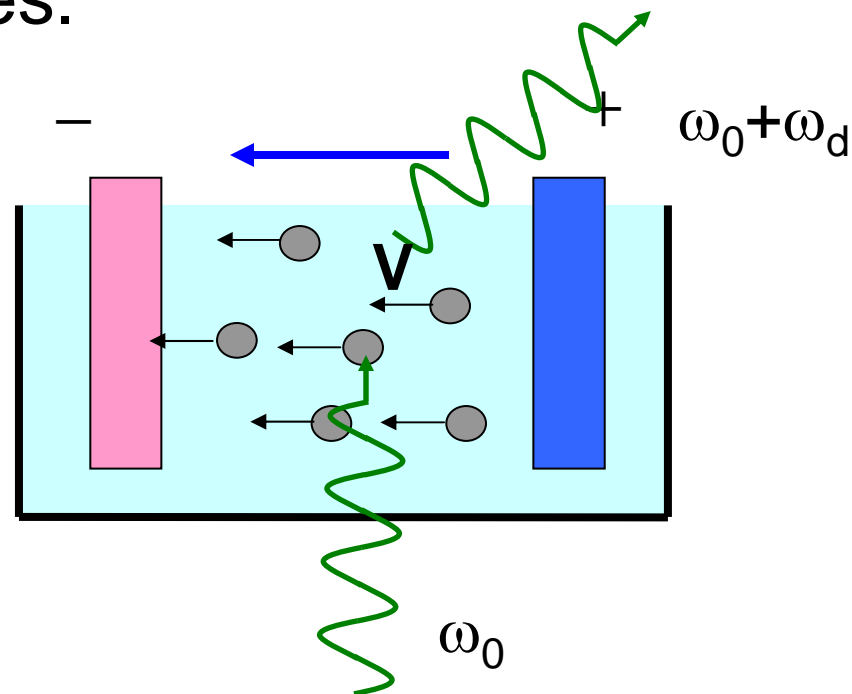
How to Measure? With the SZ-100

- Single compact unit that performs size, zeta potential, and molecular weight measurements: the SZ-100



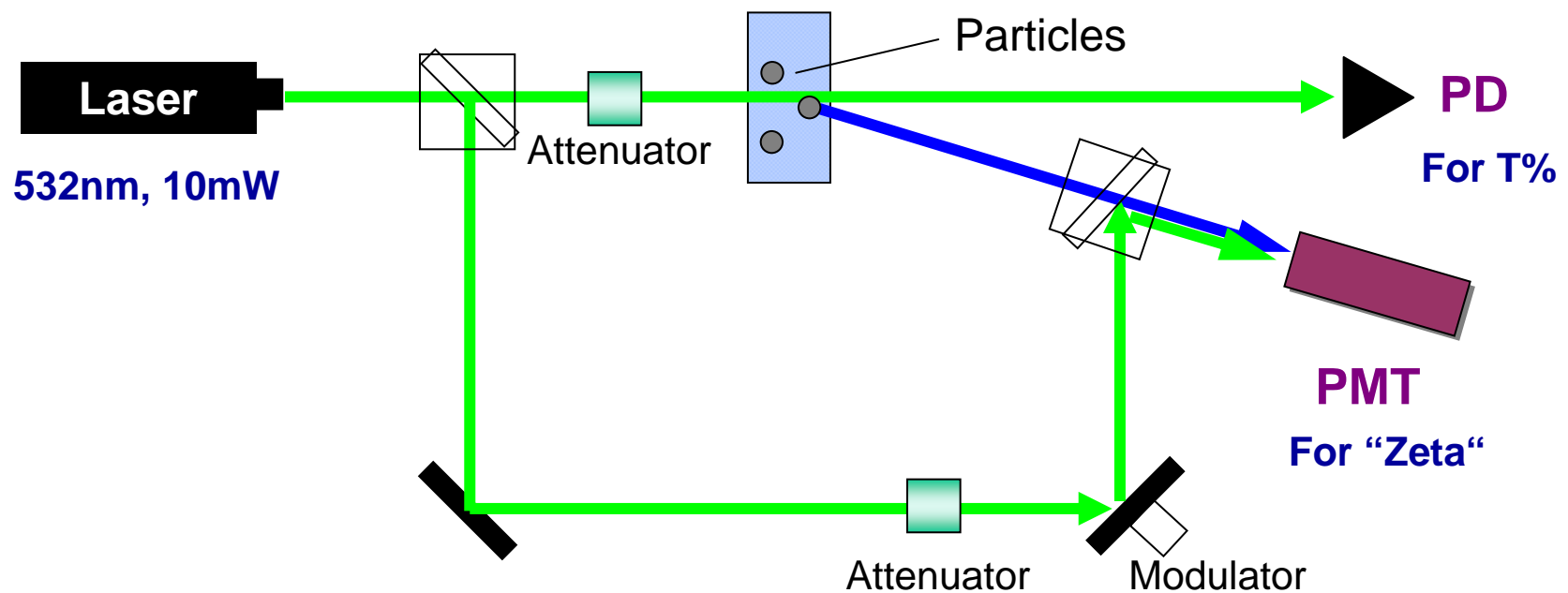
How to determine zeta potential

- Apply an electric field and probe response of particles to applied field.
- You need to see Doppler shift in scattered light due to particle motion with respect to fixed electrodes.



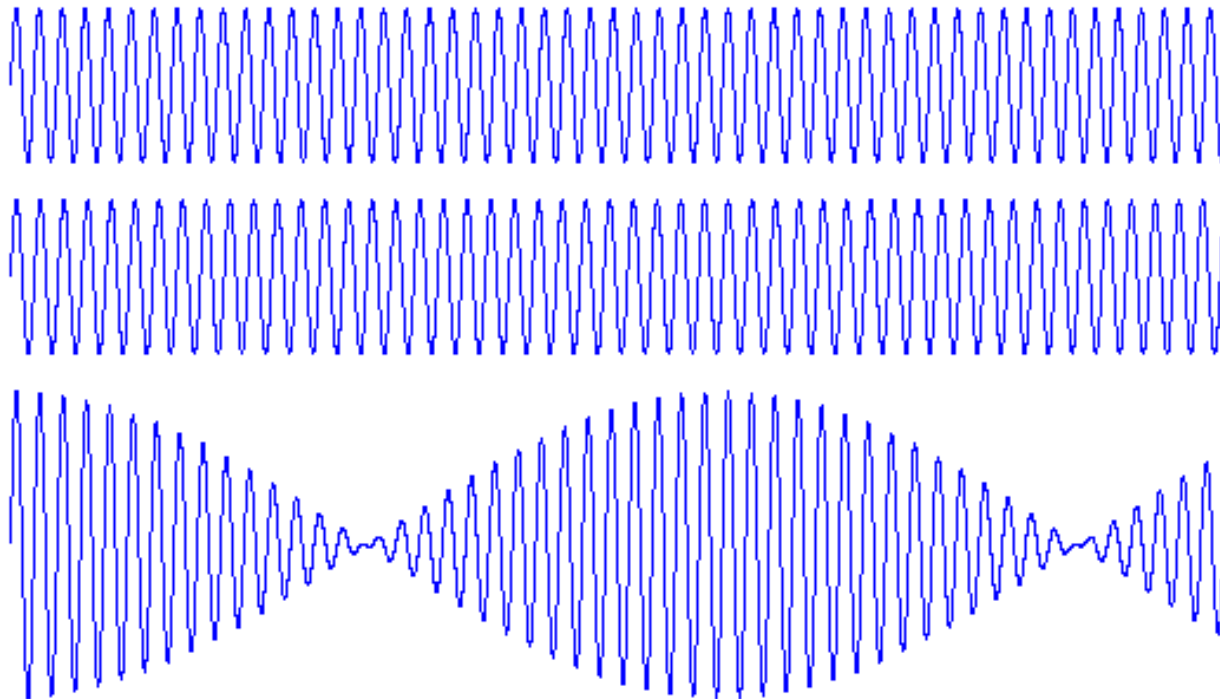
Optical System

Use optical mixing to extract motion of particles relative to electrodes.



Optical Mixing

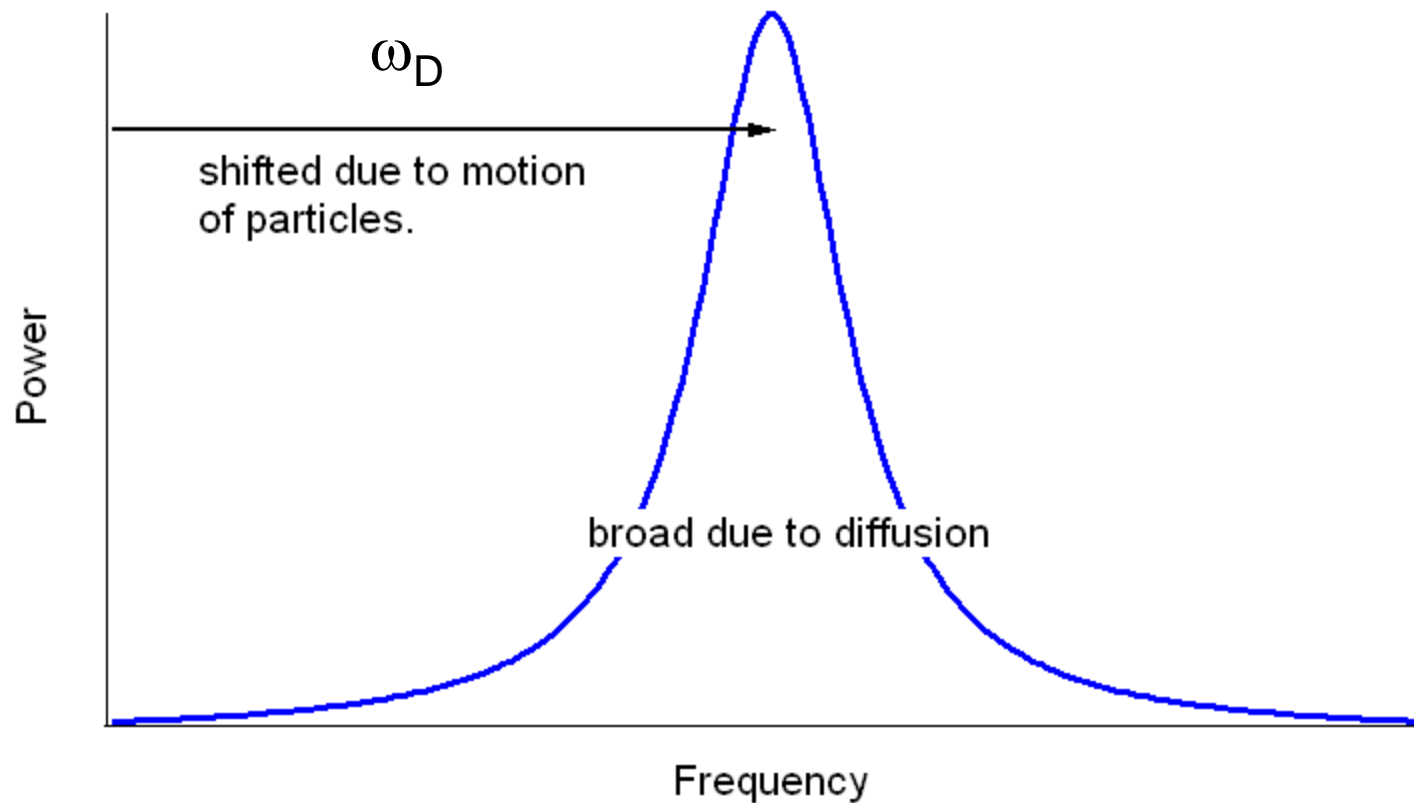
Frequencies differ by 3%



Sum of waves has easy to see oscillation

Data Analysis

- Analyze observed spectrum.



Doppler Shift Calculations

$$\omega_D = \vec{q} \bullet \vec{V}$$

ω_D = frequency (Doppler) shift, measured

q = scattering vector

$(4\pi n/\lambda)\sin(\theta/2)$, known

V = particle velocity

E = electric field strength , known

$$\mu_e = \frac{V}{E}$$

μ_e = electrophoretic mobility (desired result)

Zeta Potential Calculation

- Need to use an model to obtain zeta potential (desired quantity) from mobility (measured quantity).
- Most common is Smoluchovski (shown here)

$$\mu_e = \frac{\epsilon_r \epsilon_0 \zeta}{\eta(T)}$$

ϵ_r = relative permittivity (dielectric constant)

ϵ_0 = permittivity of vacuum

ζ = zeta potential

η = viscosity (function of temperature)

Application (Zeta Potential) **HORIBA**

● Ceramics; Ludox^R Silica

Silica	Ludox Silica ^R TM-50 with 0.01M_KCl
Sample Preparation	100 ppm

Conditions

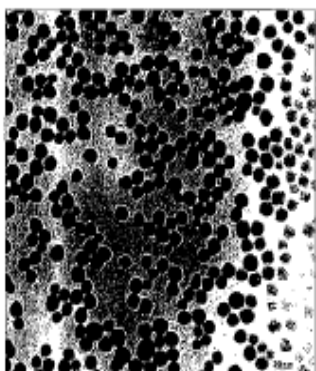
Temperature; 25 C degree

Solvent; Water

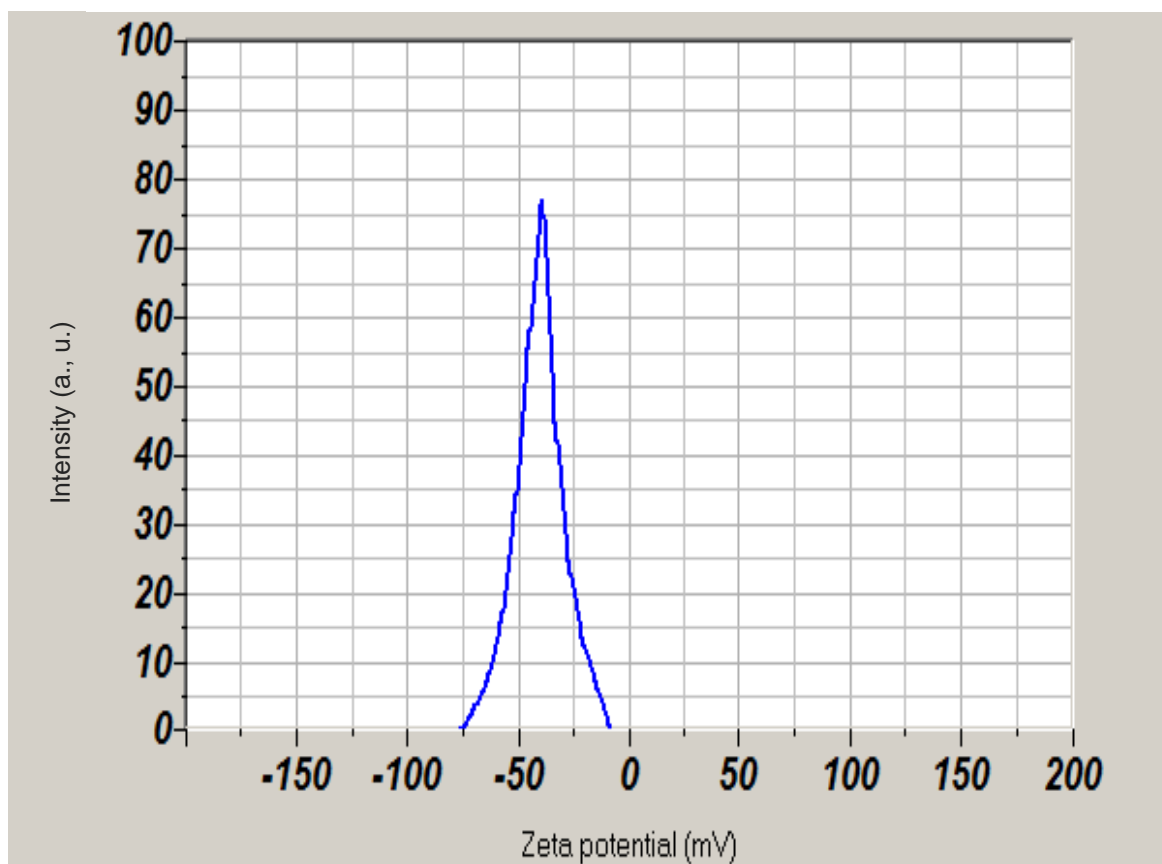
Refractive Index; 1.333

Distribution base; Scattering light

	Results
Mobility ($\mu\text{m}\cdot\text{cm}/\text{V}\cdot\text{s}$)	-3.02
Zeta Potential (mV)	-31.8



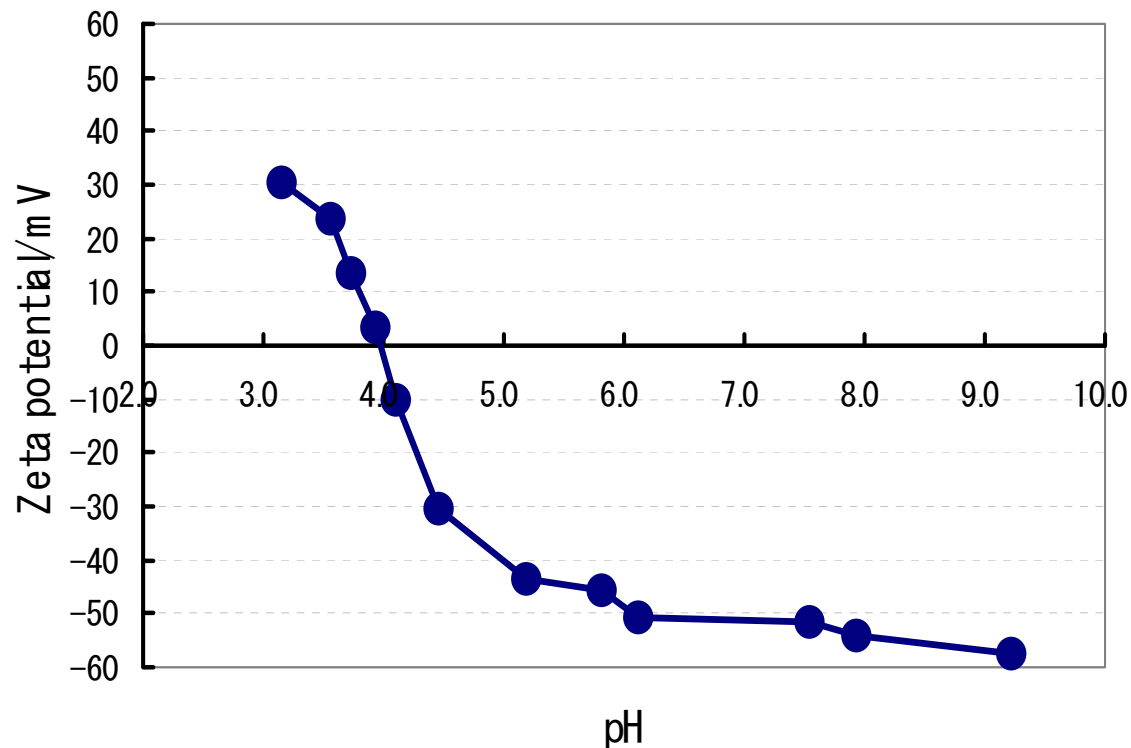
From GRACE's catalogue



Application (Zeta Potential) **HORIBA**

● Iso Electric Point of Coffee Mate

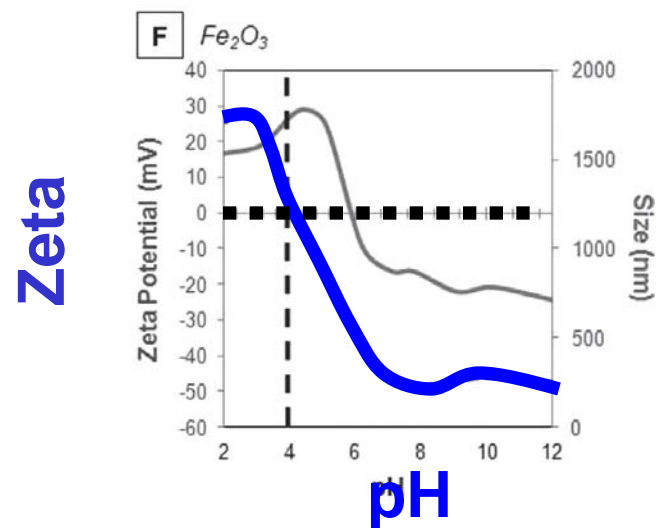
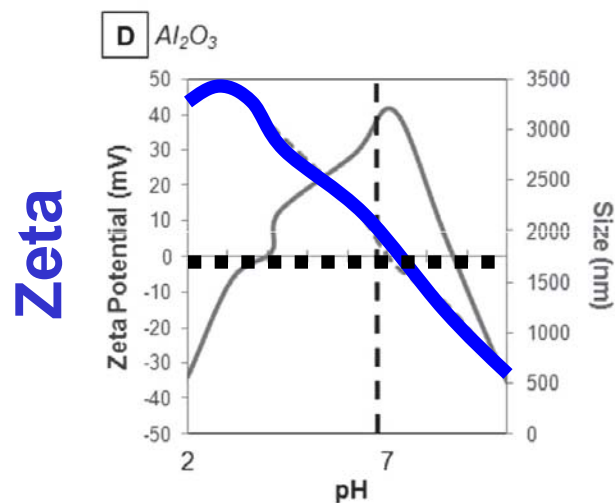
	Results
Iso-electric point	pH 4.0



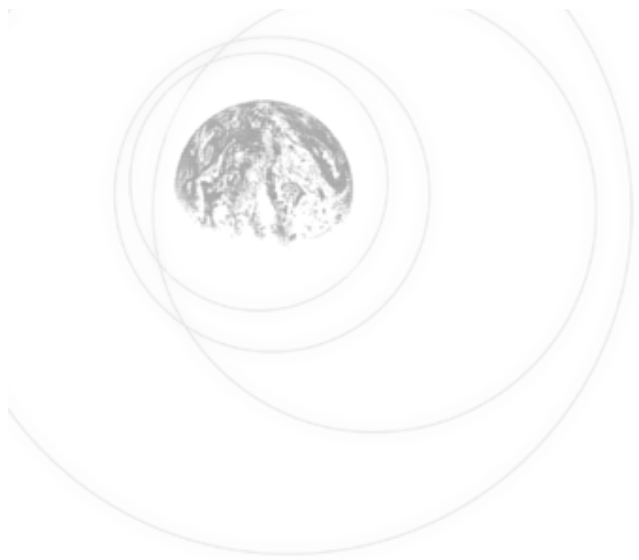
If you want to bind Ludox HS (IEP ~pH 2) to Coffee Mate, what pH should you choose?

Using Zeta Potential to Predict/Control Particle Interactions

- Note size maximum at IEP due to flocculation.
- If you mix Al_2O_3 with Fe_2O_3 , what happens?
 - At pH 2, both are positive: no interaction
 - At pH 6, Al_2O_3 is positive and Fe_2O_3 is negative: particles stick together.
 - At pH 9, both are negatively charged, no interaction.



Data from Berg et al., *Nanotoxicology*, Dec. 2009; 3(4): 276-283



Zeta Practical Tips



Explore the future

Automotive Test Systems | Process & Environmental | Medical | Semiconductor | Scientific

HORIBA

© 2010 HORIBA, Ltd. All rights reserved.

Impurities

- Zeta is a surface property.
- Result is sensitive to surface active impurities.
 - Soaps/detergents
 - Specific ions (e.g., Cl⁻, TSP)
 - Grease/oil/fingerprints (hydrophobic materials will go to surfaces of aqueous suspension)
- Keep everything extremely clean
- Keep surfactant additives in mind when interpreting data.

Electrolyte

- Recall that potential is a function of ionic strength.
- Pure water has an ionic strength of $\sim 10^{-7}$ M.
- A little bit of CO_2 from the air can raise ionic strength by a factor of 10 or 100 to 10^{-5} M.
- Use 1 mM electrolyte instead of no electrolyte to keep electrolyte levels (and therefore results) consistent from sample to sample.
- This doesn't apply for samples that already have substantial electrolyte.

Electrolyte Continued

- Titration is popular.
- Remember that acid and base will add to system ionic strength. pH 3 corresponds to 10^{-3} M electrolyte.
- Adding acid or base will increase ion concentration.
- Start with a 10 mM (10^{-2} M) salt (KNO_3) concentration to keep acid/base concentration from affecting results.

Why Zeta Potential?

- Use measured surface charge to predict colloidal stability
- Use measured surface charge to predict particle-particle interactions

Q&A

Ask a question at labinfo@horiba.com

Keep reading the monthly [HORIBA Particle](#)
e-mail newsletter!

Visit the [Download Center](#) to find the video and slides
from this webinar.

Jeff Bodycomb, Ph.D.

P: 866-562-4698

E: jeff.bodycomb@horiba.com

Thank-you